

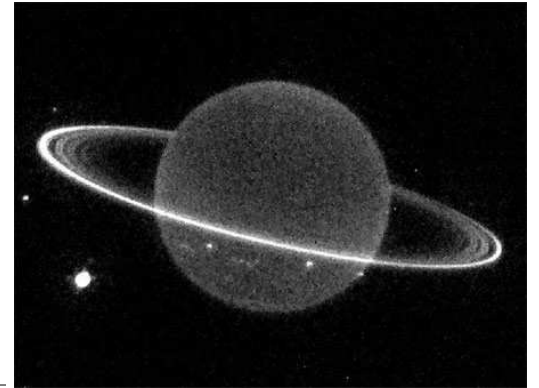
LANL Environmental Chem Modeling: Today, Marine Organics

LANL –CCS, XCP, T, EES

External – ORNL, IARC, NMT, UW(a), NPS, PNNL

Students –NMT, Columbia, Chicago, UW(i), local high schools

Sponsors –HILAT, RUBISCO, CNLS, CSES, DTRA, ASC for TR, NA-24, Outreach



(What is the Galaxy Made of? ...Seriously)

LANL –SE
External – Help!
Students –Help!
Sponsors –Help!

Breadth of Effort (Complexity 4 SM):

Philosophy

(Redmods for packaging)

Up the Energy Scale

(Nukes near bottom!)

High Latitude Ocean

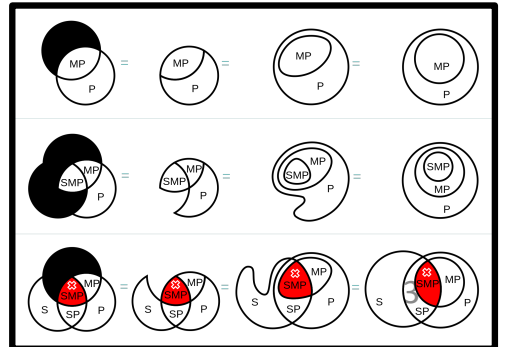
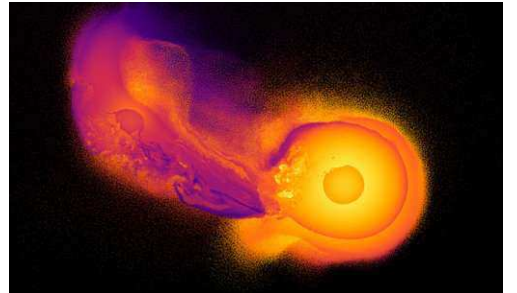
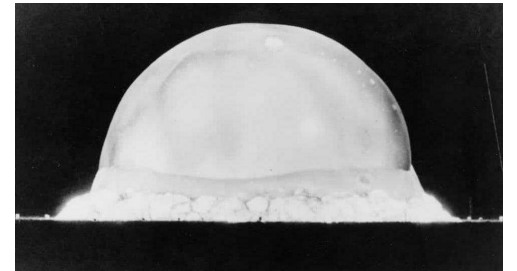
(Open, rivers, analysis)

ET Processes

(Giant impact)

Addenda

(Theory)



Weapons Effects: the Low End

Began at Fallout Range

(Reduction on trajectories)

Adapt smog aerosol dynamics

(But from 3000 Kelvin)

Don't forget sweep

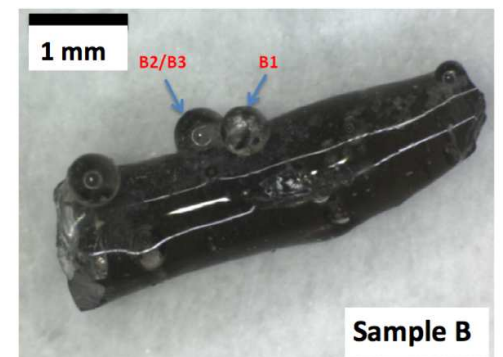
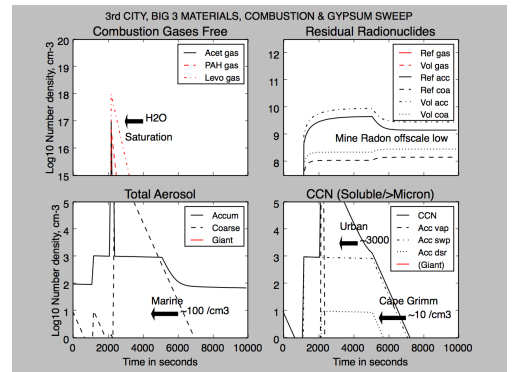
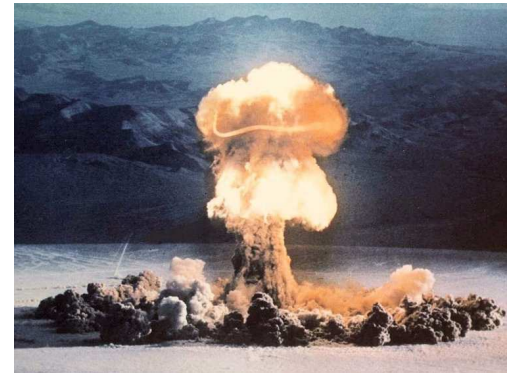
(Global Geology)

Back to Fireball Core

(Plasma, radiation etc.)

Identify huge uncertainties

(Manageable schemes)



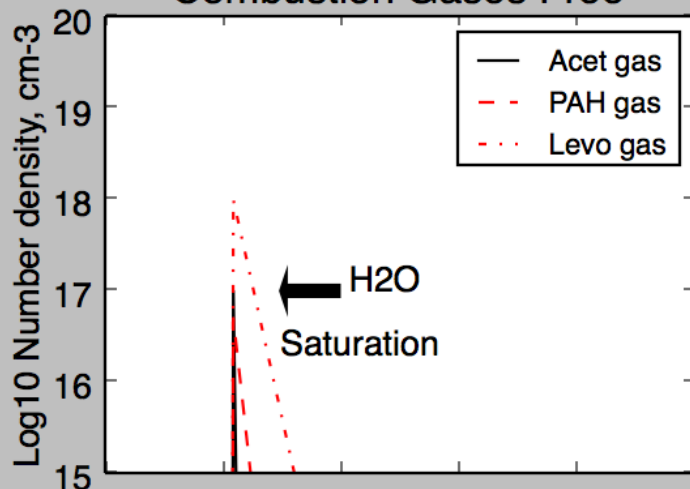
Modernize the Urban Firestorm



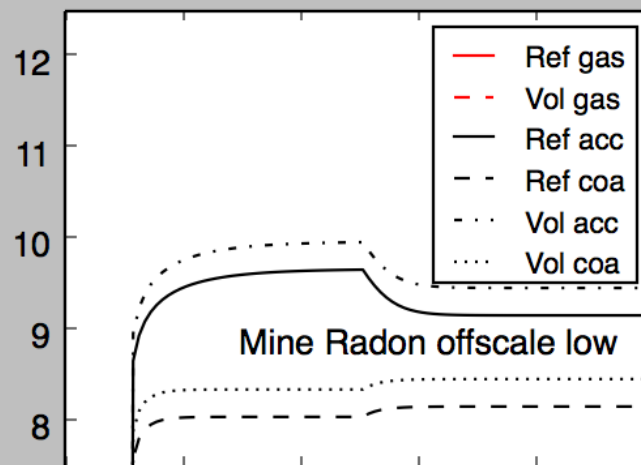
Zoom on Effectiveness/Effects

3rd CITY, BIG 3 MATERIALS, COMBUSTION & GYPSUM SWEEP

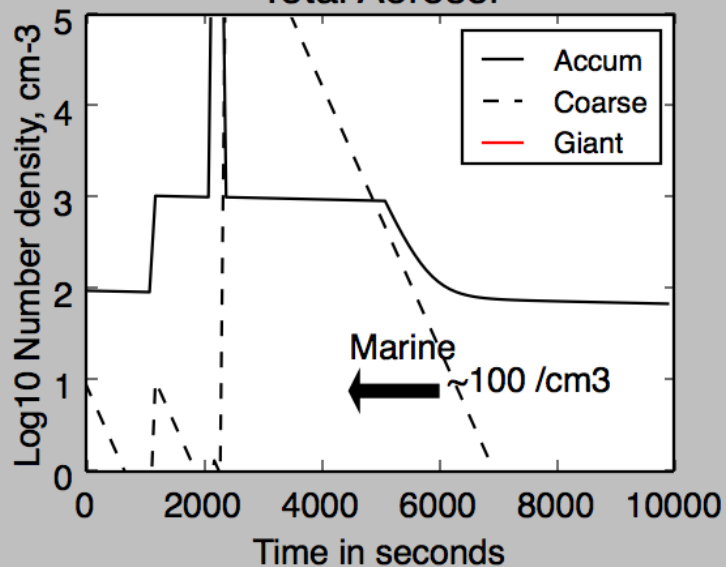
Combustion Gases Free



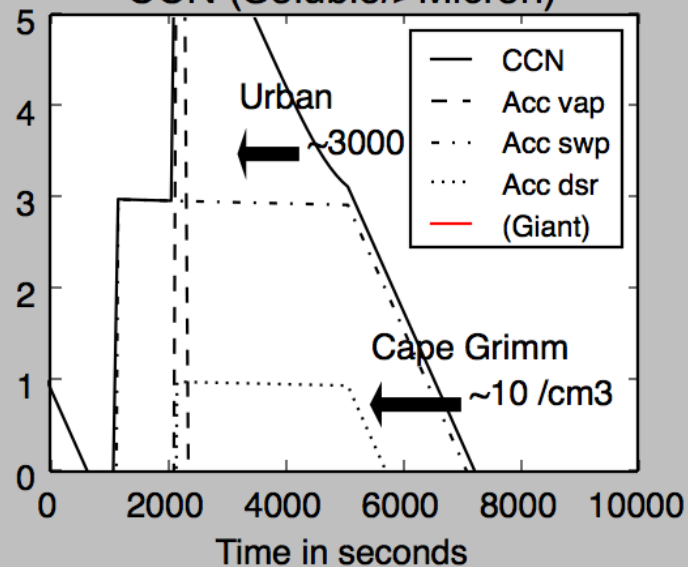
Residual Radionuclides



Total Aerosol



CCN (Soluble/>Micron)



Marine Chem of: Reduced Carbon

SKIP

DMS, methane clathrates

(Small molecules)

Primary Organic Aerosol

(Surfactants)

Biogeochemical EOS

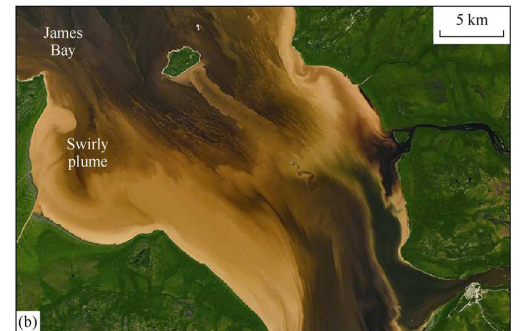
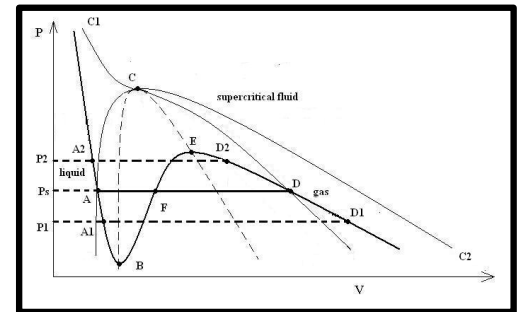
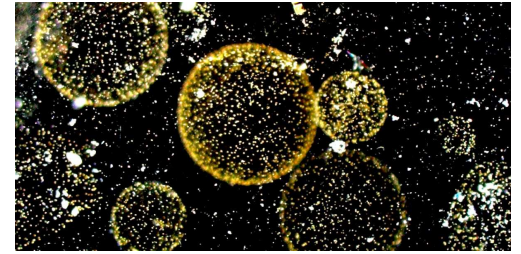
(Gaia in a huge way)

Arctic Rivers

(Jump start IOMB)

Energetics?

(Blooms, melts, fluxes)



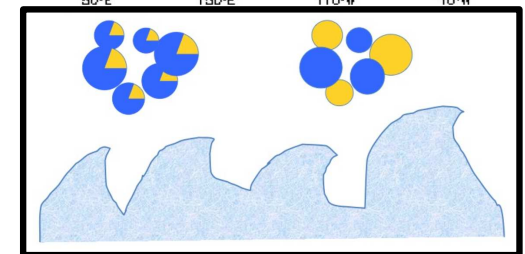
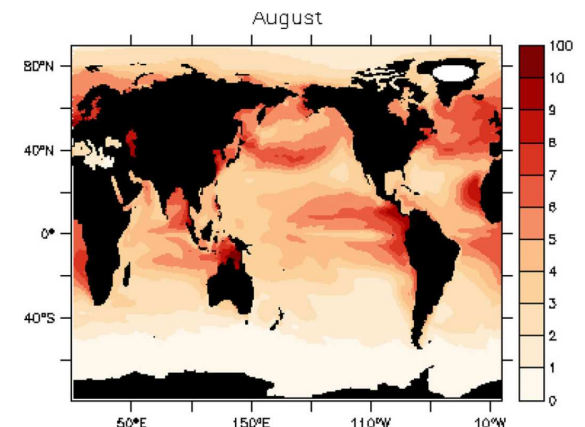
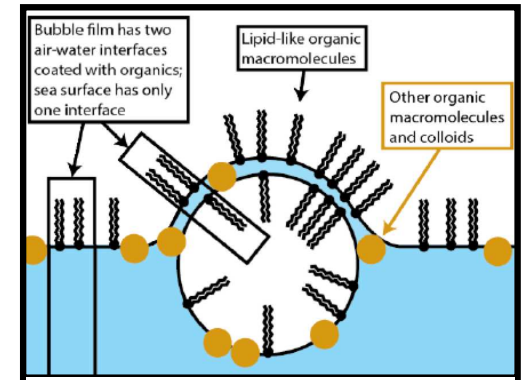
Start from Surfactants and POA:

Standard Story Line
(Bubble burst)

Macromolecular Adsorption
(Prots, lipids, hetpc)

Ogunro Maps Accordingly
(Global patterns)

Burrows OCEANFILMS
(-4 W/m²)



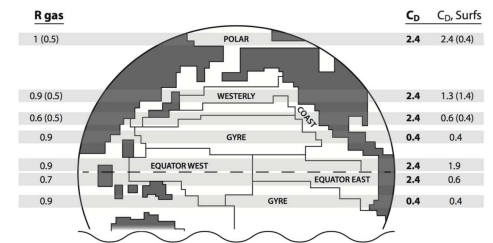
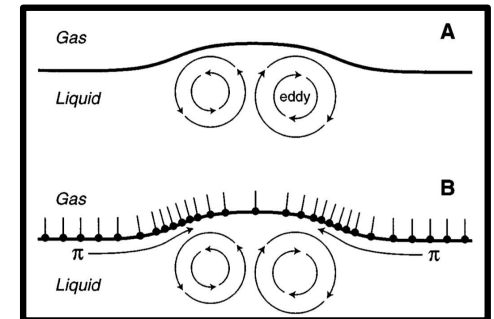
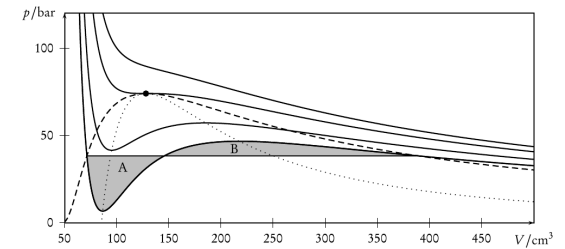
Effect Interface Energetics Too! A Biogeochemical Equation of State:

Think Van der Waals but 2d
(Planar g, l, s)

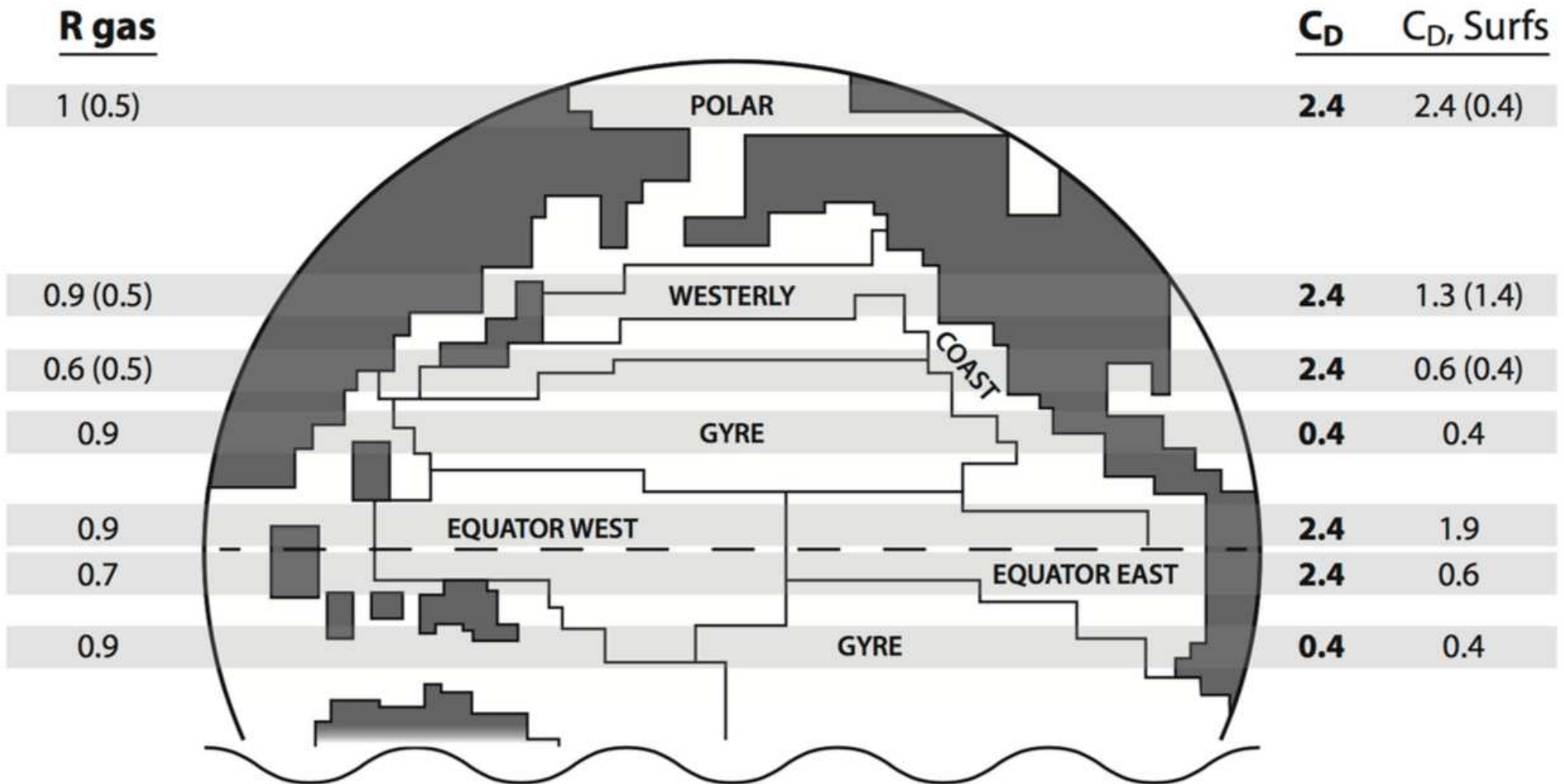
Surface Tension & Eddy Control
(Prots, lips most effective)

Elliott Maps Accordingly
(Under referee duress)

If Correct, Super-Gaian
(Phyto steer currents...)
(Momentum transfer and also)
(heat, water vapor, trace gases)



Zoom for ORNL Benefit



Zoom on Δ Tension... C_d Needed

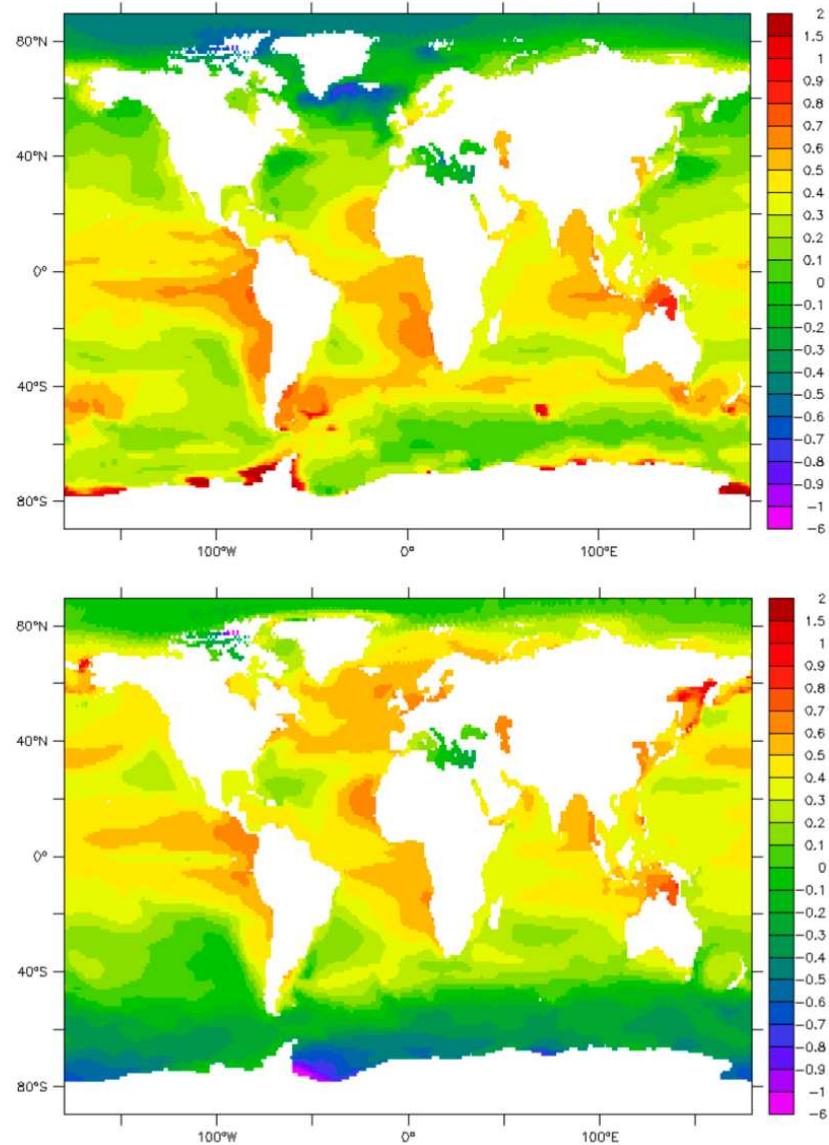
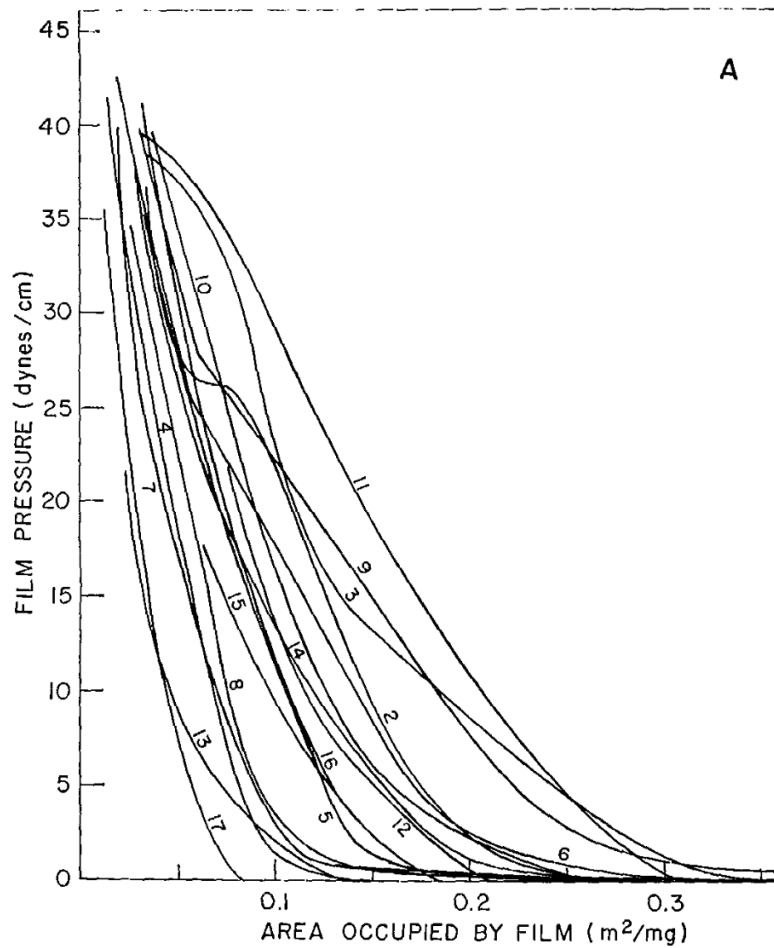
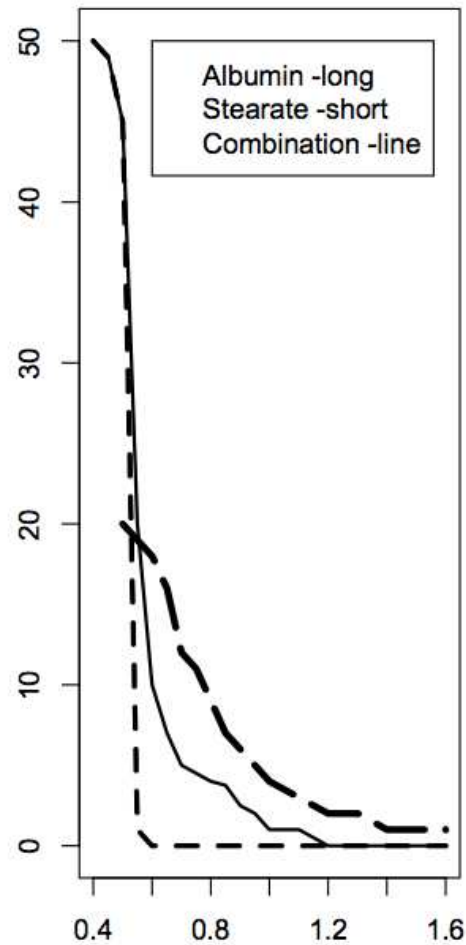


Figure 1. Log surface pressure maps (Δ tension) assembled using the baseline Ogunro et al. model output [33] plus marine 2D equations of state described in Appendix A. The color bar has been set so a reference range of 0.3–3 mN/m is central (–0.5 to 0.5 in log units). February and August monthly averages are shown for a typical year near the turn of the millennium.

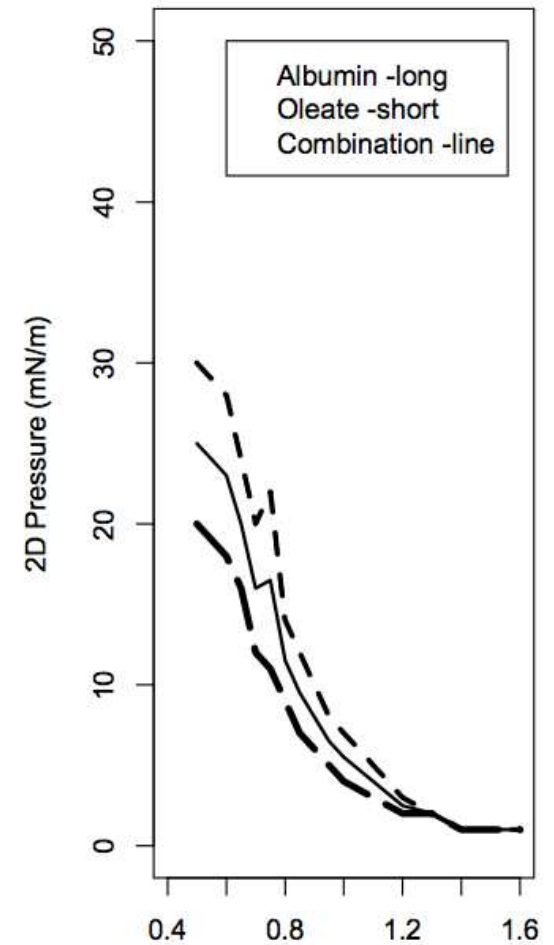
Zoom on Validation... IOMB Needed



Spread with Solid



Spread with Liquid



(OGUNRO DID DOC TABLES, BUT...)

(A)

(B)

Arctic Riverine Chemistry:

Total organic mechanisms

(From headwaters)

All dissolved classes, functions

(Open sea plus aromatics)

Floodplain is dilution driven

(Initialize for RVIC, MOS)

Mixed particulates soon

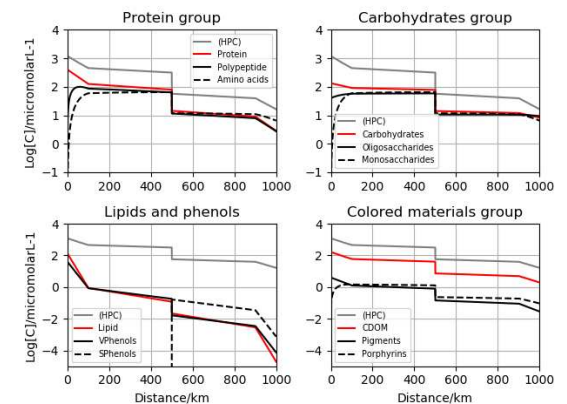
(POC plus minerals)

Multiple effects

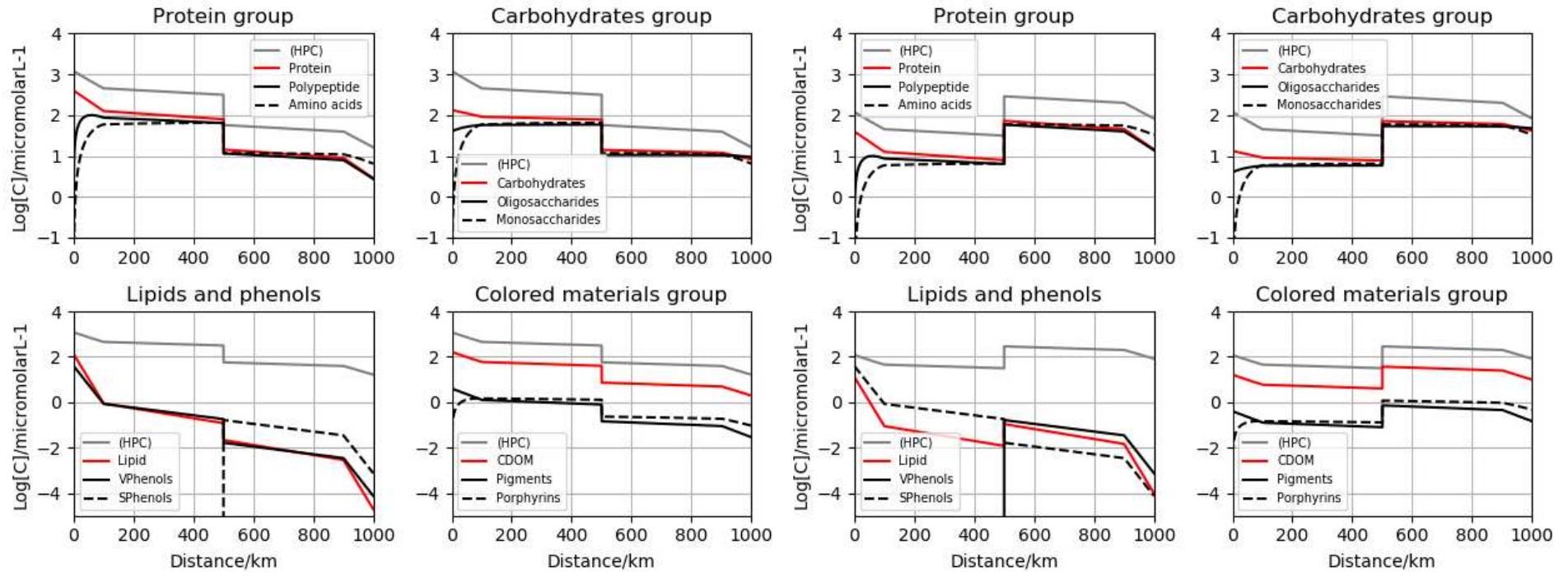
(Turbidity, surfactants,)

(Antifreeze...)

(And of course N)



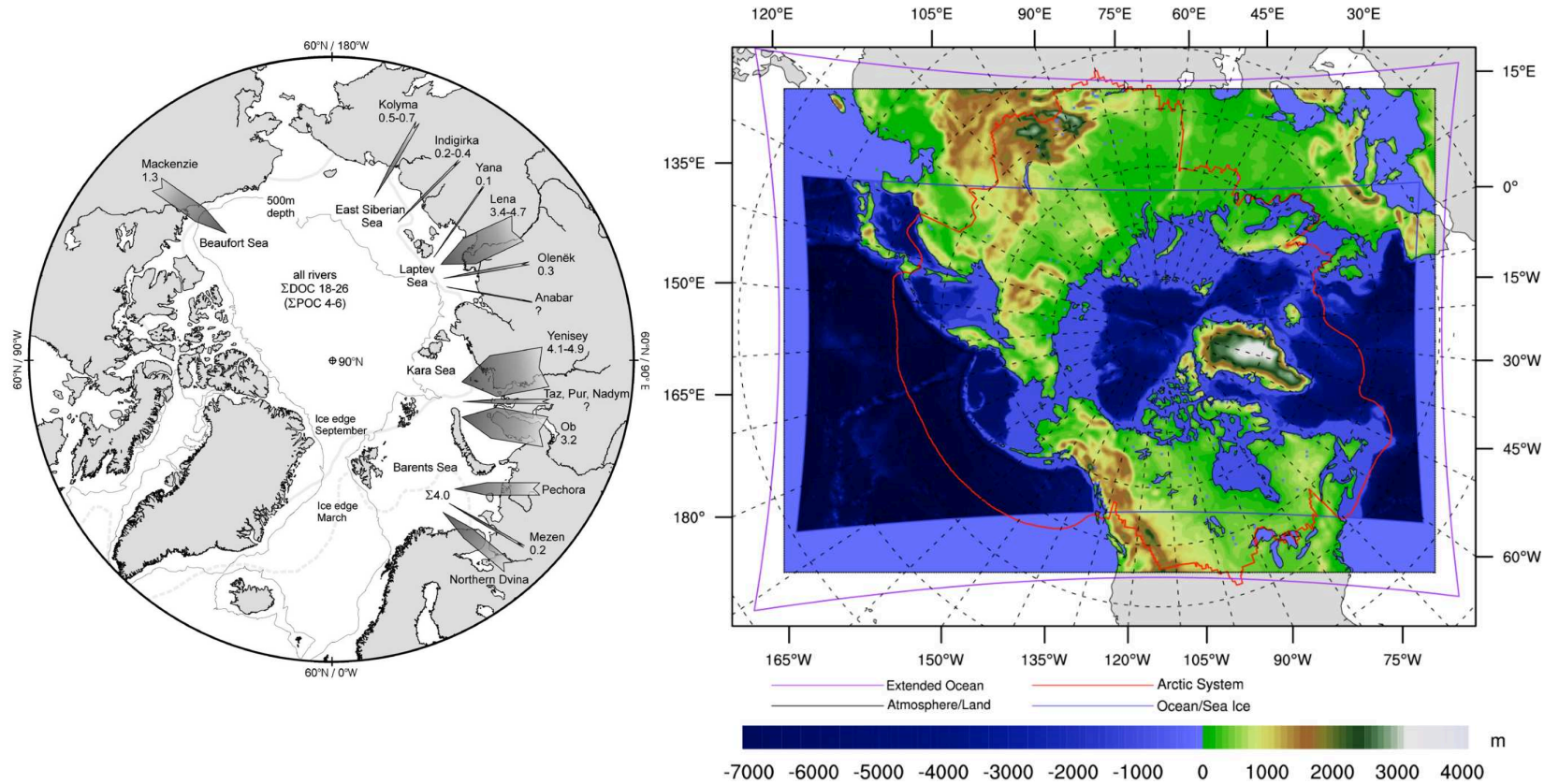
Zoom for AJ Benefit



Lena –Swimming Upstream



RASM and Other Sophisticated Grids



Iron at the Global Interface: UWisc

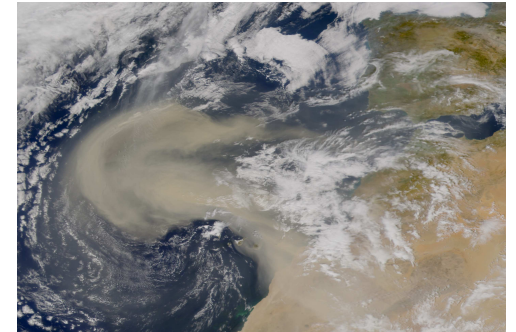
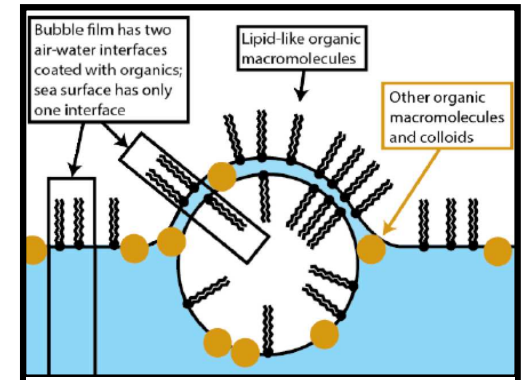
Use IOMB data, 2D Redmods
(IT logic)

Are POA polymers ligands?
(Proteins, polysacchs)

Or adsorbed macromolecules?
(Proteins, lipids)

Or Meskhidze upper column?
(alpha hydroxy moeity)

Reduced carbon regulates metal
(2D bioreactor?)



Giant Impact: the High End

The Molecular Cloud

(Scale beyond imagining)

Sub-nebulae

(Planets and rings)

Equations of State

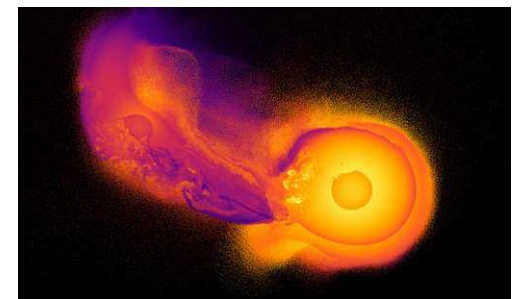
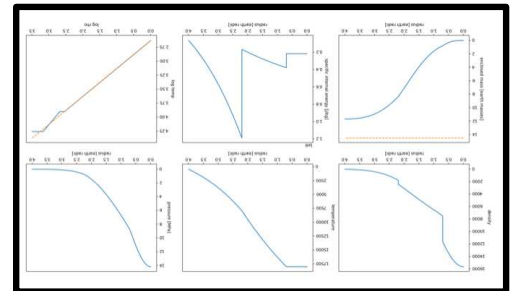
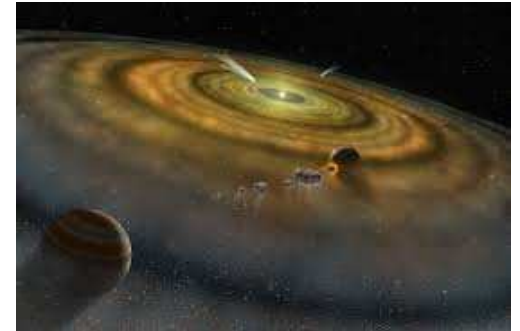
(In outer solar system)

CHON Equilibria

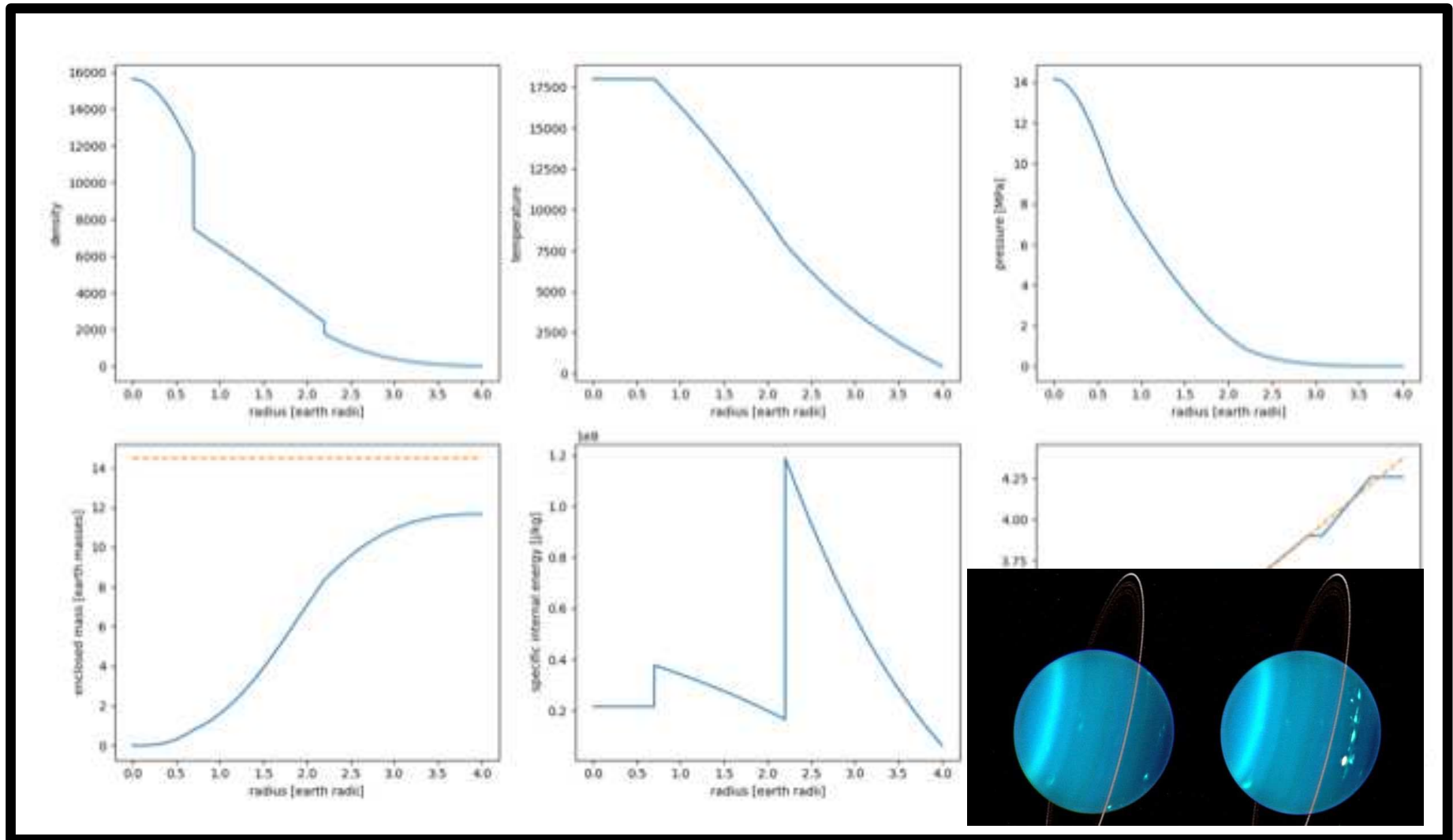
(The molecular “ices”)

Organic synthesis

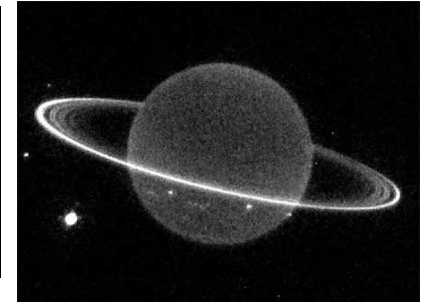
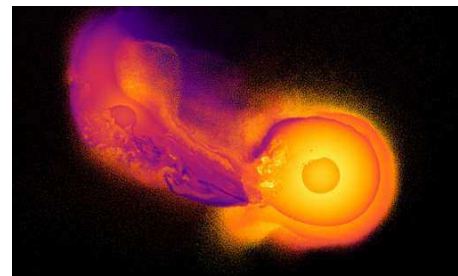
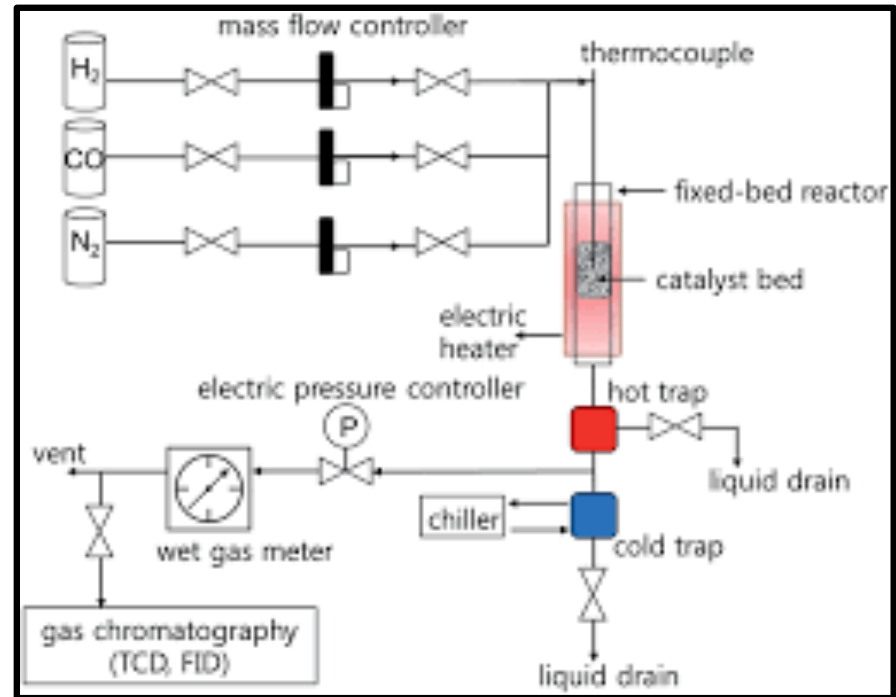
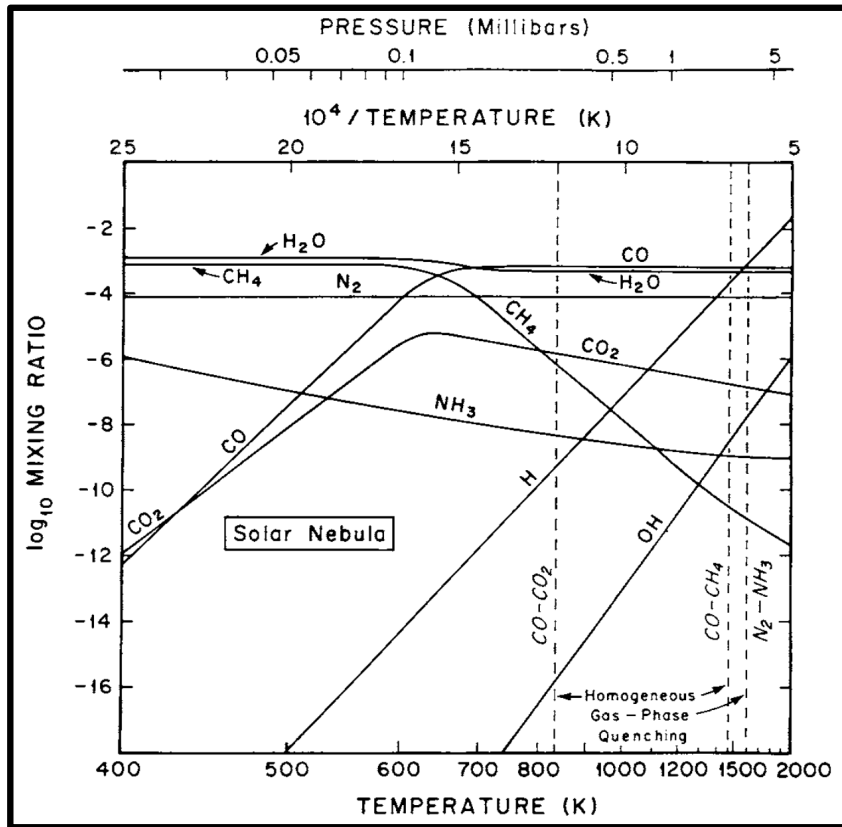
(E.g. Fischer Tropsch)



Zoom for XCP Students



Uranian Futures



Philosophy and Theory:

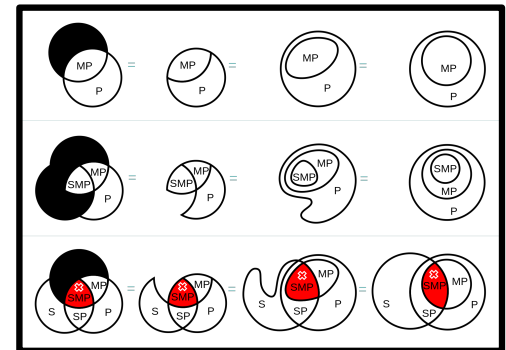
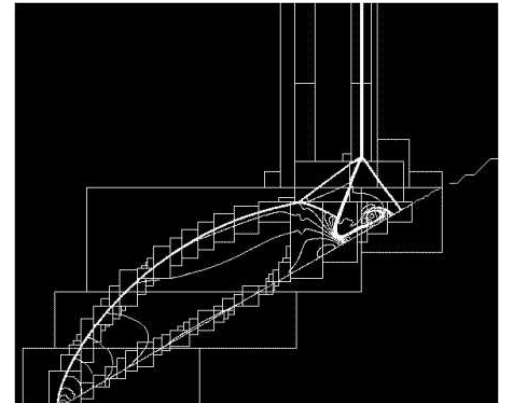
Systems a Huge Opportunity
(Plenty of room 4 procs)

Scan in Reduced Mode, Package
(Chemistry distilled)

Officially...

*(Minus-First Law,
Set theory, Shannon information,
Mark-recapture,
Reverse selection...*

It's UQ Backwards... Impacts NC Stats
IOMB extension to Rivers, Proteins, more



A dash of Info-Theory for IOMB:

Scores require tuning

(See Collier et al. 18)

Shannon Opportunity?

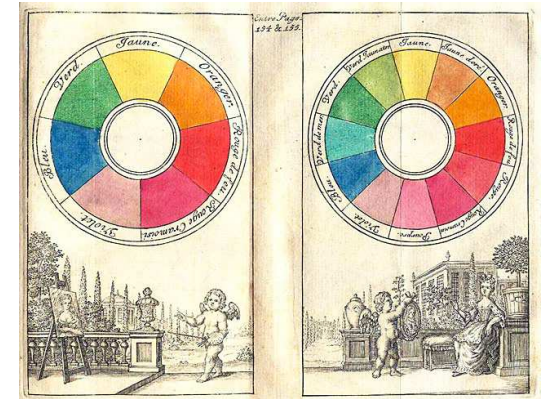
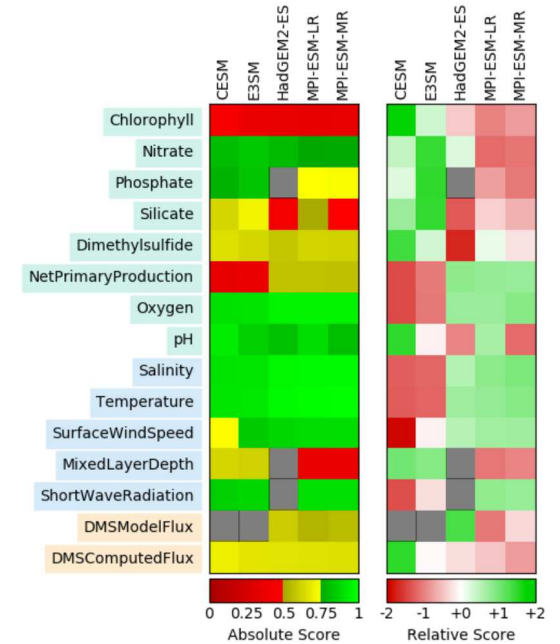
(Between primary colors)

Attend to sparse data

(Identify new processes)

Develop Theory

(AJ digs Stat Mech)



Importance of This Stuff: Cosmic

Pulse Outcomes f(Chemistry)

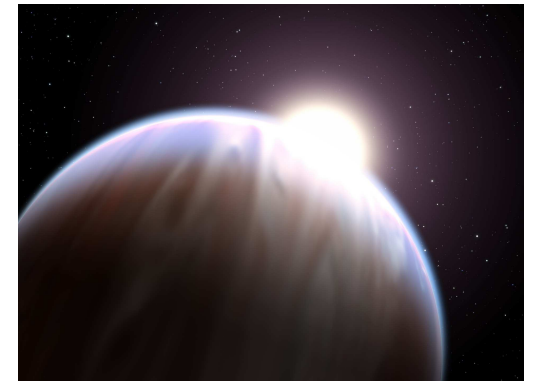
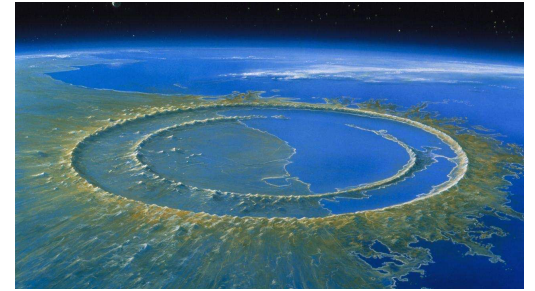
(Bursts to asteroids)

High Latitude Ocean

(ESM accuracy, GAIA)

Extra-Terrestrial

(Exoplanets coming)



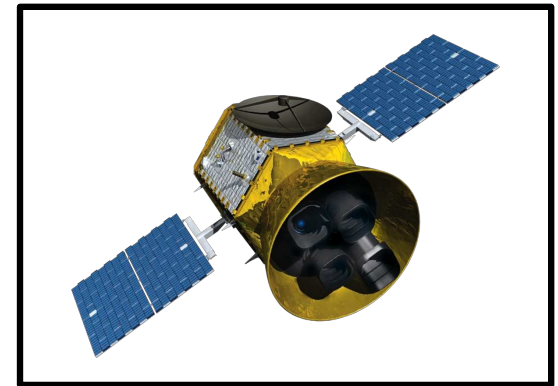
Validation:

Weapons Effects
(Test site etc.)

High Latitudes
(Ongoing, community)

Extra-Terrestrial
(Exoplanets coming!)

Analysys and IOMB
(Sparse data are good data... Orgs!)



ILAMB

THE INTERNATIONAL LAND MODEL BENCHMARKING PROJECT

Breadth of Effort (Complexity 4 SM):

Philosophy

(Redmods for packaging)

Up the Energy Scale

(Nukes near bottom!)

High Latitude Ocean

(Open, rivers, analysis)

ET Processes

(Giant impact)

Addenda

(Theory)

